

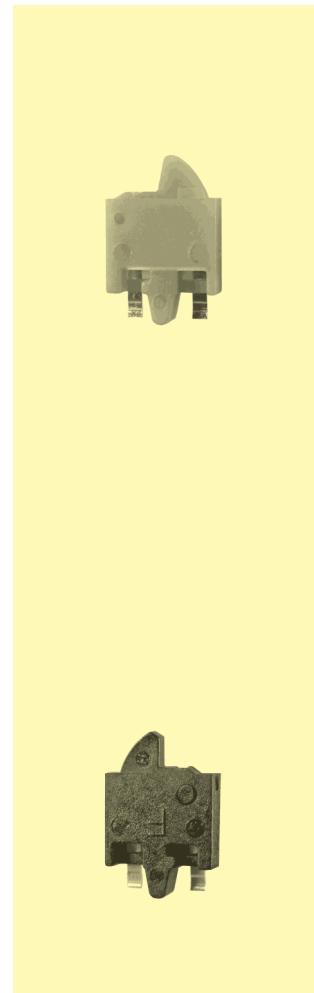
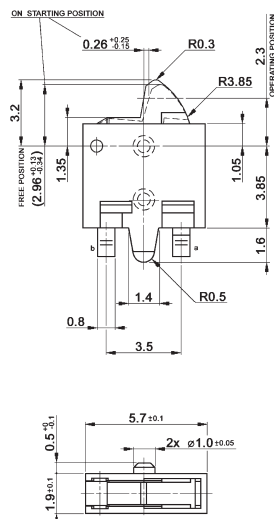
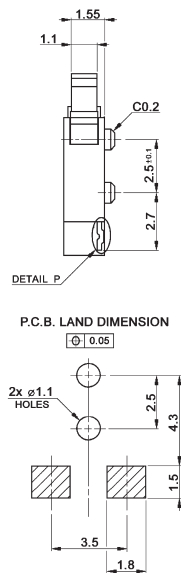
Detector Switches

Specifications:

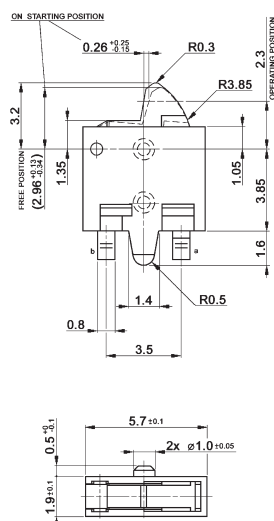
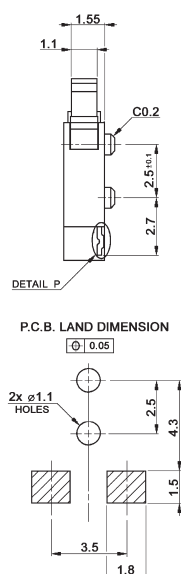
Contact rating:	5 V DC, 10 mA
Contact resistance:	< 500 mΩ
Insulation resistance:	> 100 MΩ
Dielectric strength:	500 V, 50 Hz for the duration of 1 minute
Operating temperature:	-20 °C to +70 °C
Operating force:	< 0.28 N
Mechanical life:	minimum 100 000 operations
Material:	Contacts: stainless steel, silver-plated Terminals: brass, silver-plated Case and actuator: PA9T, black

Models: Switching functions

DTS 207 CP R T-1 off - mom



DTS 208 CP R T-1 off - mom



Packing: 2500 pcs/reel